

eden
residences

CAPITOL

Timeless Heritage

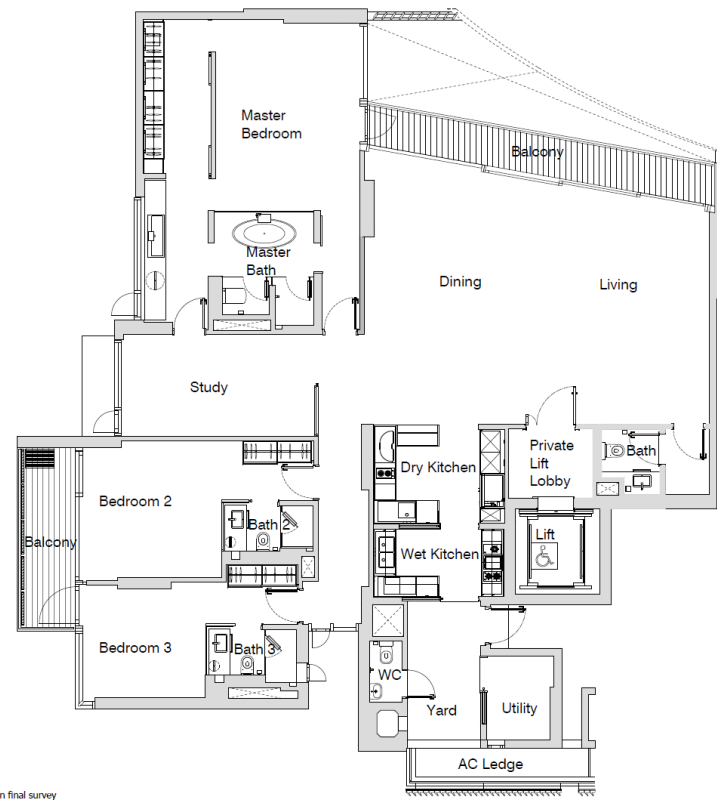
Project Information

<u>Project Information</u>	
Project Name	Eden Residences Capitol
Developer	Perennial
Address	11 Stamford Road
District	06
Number of Units	39
Site Area	177,755 sqft
Description	Mixed Development with Hotel, Retail, Theatre and Residential. Direct access to City Hall MRT Station
Architect	Richard Meier and Partner Associate LLP
No of Car Park Lots	80

Site Plan – Level 3



Type C1 Typical(3+1Br) [BP09 SUBMISSION SET]



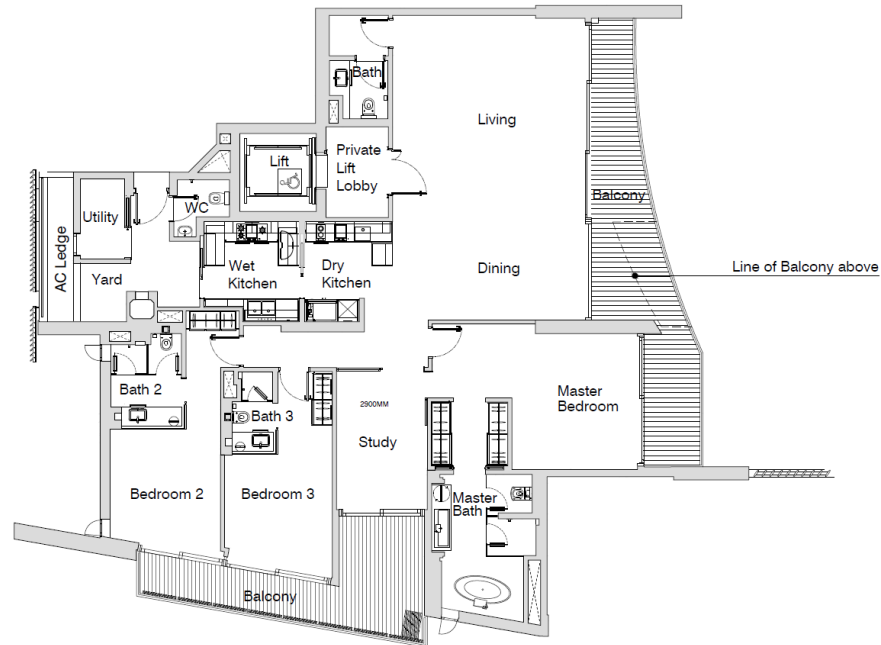
Note:
1. Boundaries are provisional and subject to alternation on final survey
2. For final layout and latest building details, please refer to latest approved drawing plan
BP Approval: A1252-00482-2011-BP09 (23 03 2016)

SCALE 1:100 0 1 2 3 4 5M CAPITOL DEVELOPMENT

#05, 06, 07,
08, 09, 10-03
3003sqft

Type D1a @L5 (3+1Br) [BP09 SUBMISSION SET]

#05-04
3068sqft



Note:
1. Boundaries are provisional and subject to alternation on final survey
2. For final layout and latest building details, please refer to latest approved drawing plan

BP Approval: A1252-00482-2011-BP09 (23 03 2016)

SCALE 1:100 0 1 2 3 4 5M CAPITOL DEVELOPMENT

Type D1 Typical (7th & 8th) (3+1Br) [BP09 SUBMISSION SET]



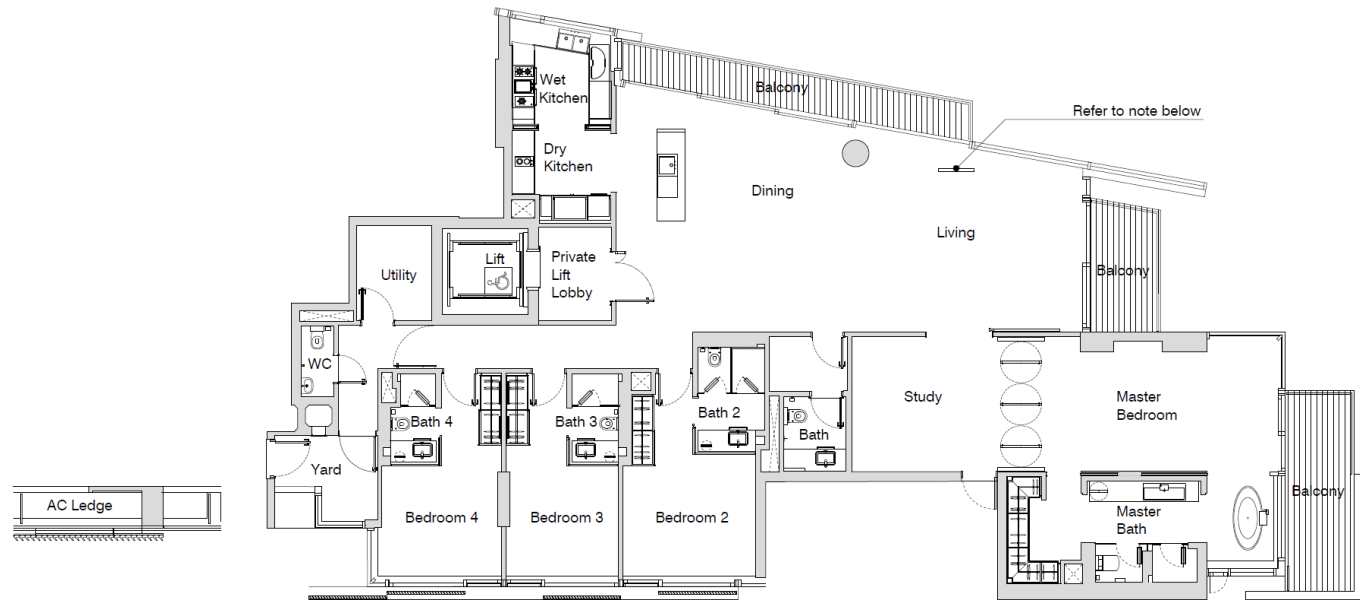
#07, 08, 10-
04
3068sqft

Note:
1. Boundaries are provisional and subject to alternation on final survey
2. For final layout and latest building details, please refer to latest approved drawing plan
BP Approval: A1252-00482-2011-BP09 (23 03 2016)

SCALE 1:100 0 1 2 3 4 5 M CAPITOL DEVELOPMENT

Type A1 Typical(4 + 1Br) [BP09 SUBMISSION SET]

#05-01
3391sqft



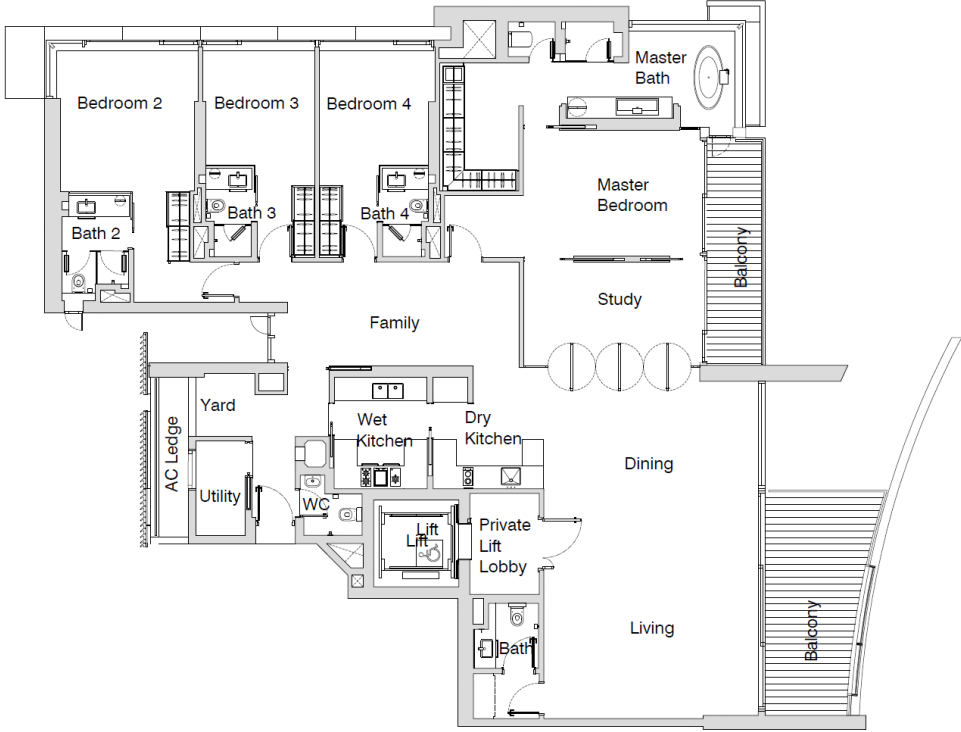
- Note:
1. Low wall is built up to the height of approximately 540mm only
 2. Boundaries are provisional and subject to alternation on final survey
 3. For final layout and latest building details, please refer to latest approved drawing plan

BP Approval: A1252-00482-2011-BP09 (23 03 2016)

SCALE 1:100 CAPITOL DEVELOPMENT

#08-05
3369sqft

Type E1 Typical(7th & 8th) (4+1Br) [BP09 SUBMISSION SET]

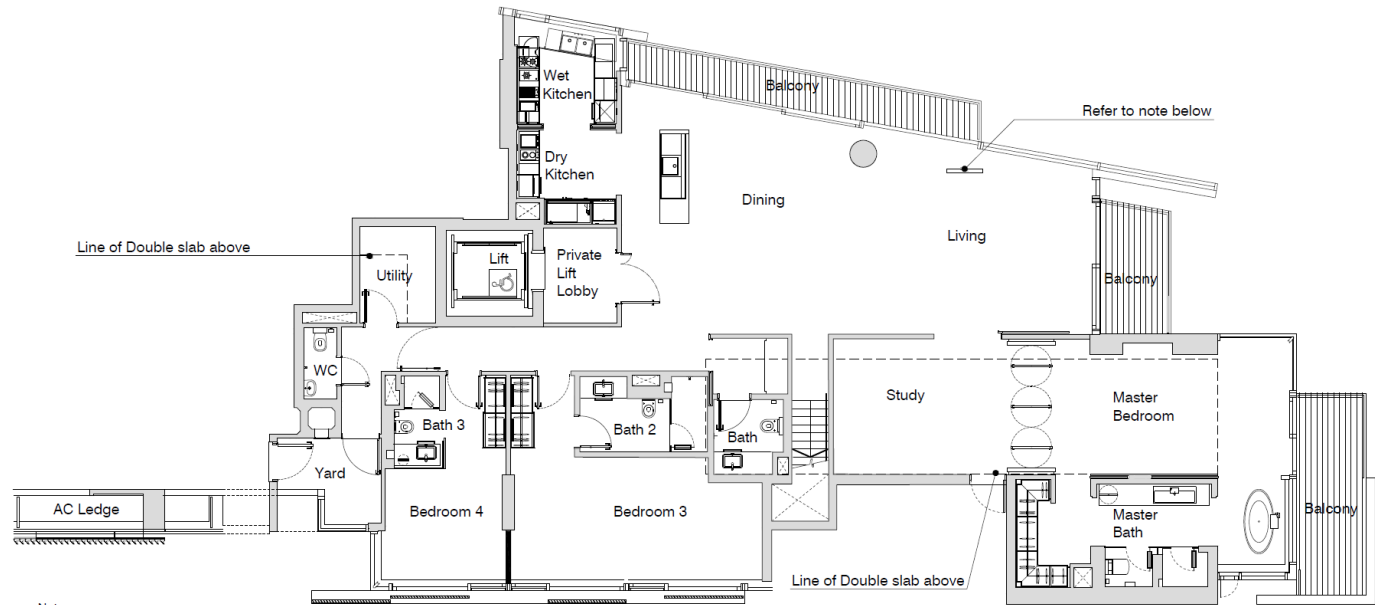


Note: 1. Boundaries are provisional and subject to alteration on final survey.
2. For final layout and latest building details, please refer to the latest approved building plan.

BP Approval: A1252-00482-2011-BP08 (XX XXX 2016)

Type Ph A Lower 4+1Br [BP09 SUBMISSION SET]

#10-01
Lower
6469sqft



Note:
1. Low wall is built up to the height of approximately 540mm only
2. Boundaries are provisional and subject to alternation on final survey
3. For final layout and latest building details, please refer to latest approved drawing plan

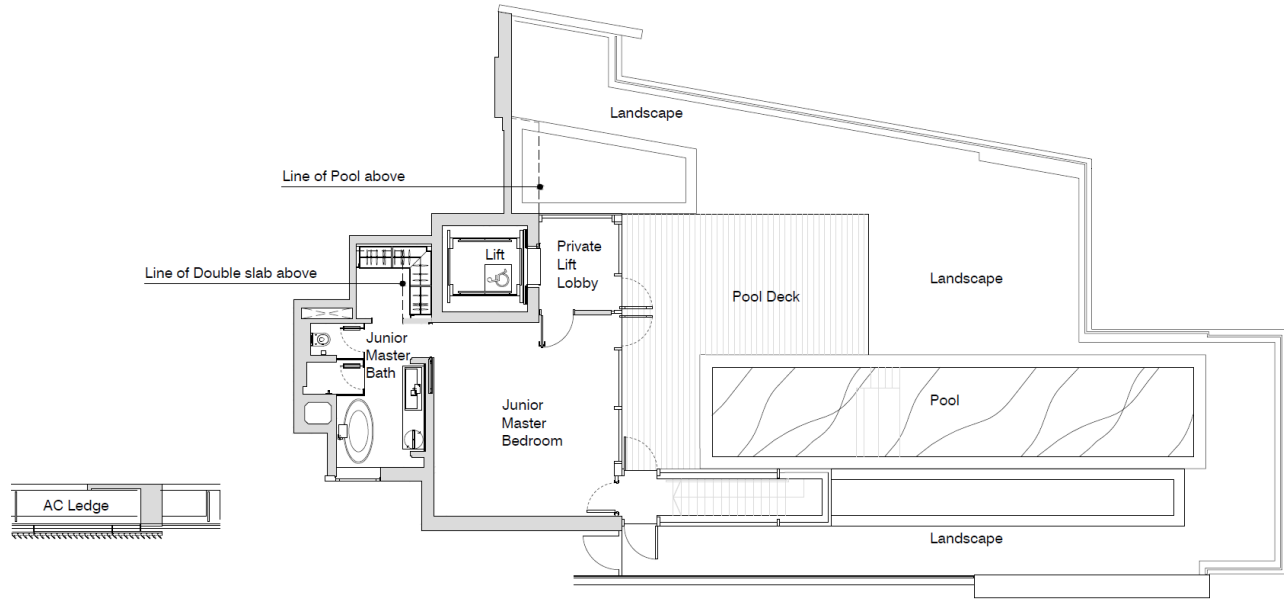
BP Approval: A1252-00482-2011-BP09 (23 03 2016)

SCALE 1:100 0 1 2 3 4 5 M

CAPITOL DEVELOPMENT

Type Ph A Upper(4+1Br) [BP09 SUBMISSION SET]

#10-01
Upper
6469sqft



Note:
1. Boundaries are provisional and subject to alternation on final survey
2. For final layout and latest building details, please refer to latest approved drawing plan

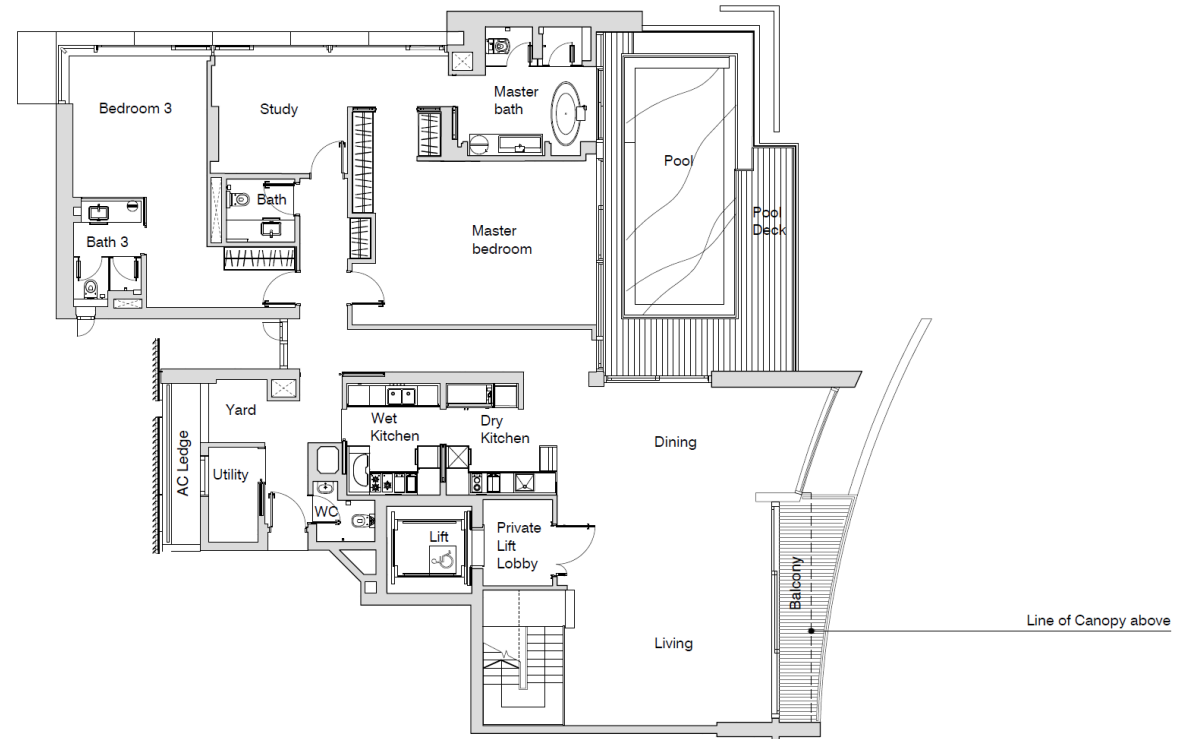
BP Approval: A1252-00482-2011-BP09 (23 03 2016)

SCALE 1:100 0 1 2 3 4 5 M

CAPITOL DEVELOPMENT

#11-05
Lower
6609sqft

Type PH E Lower(5+1Br) [BP09 SUBMISSION SET]



Note:
1. Boundaries are provisional and subject to alternation on final survey
2. For final layout and latest building details, please refer to latest approved drawing plan

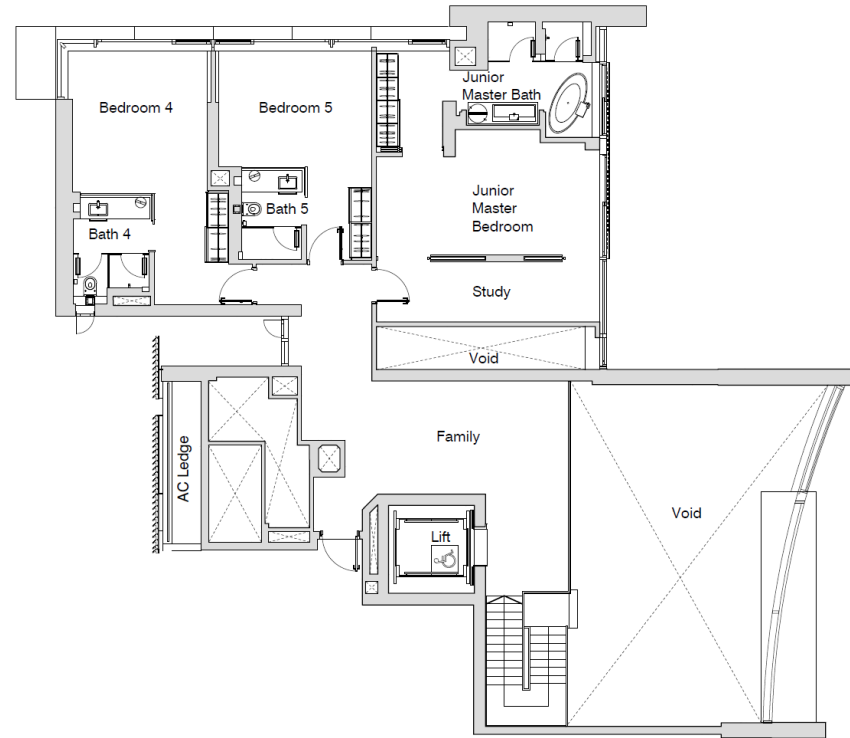
BP Approval: A1252-00482-2011-BP09 (23 03 2016)

SCALE 1:100 0 1 2 3 4 5 M

CAPITOL DEVELOPMENT

#11-05
Upper
6609sqft

Type PH E Upper(5 + 1Br) [BP09 SUBMISSION SET]



Note:
1. Boundaries are provisional and subject to alternation on final survey
2. For final layout and latest building details, please refer to latest approved drawing plan

BP Approval: A1252-00482-2011-BP09 (23 03 2016)

SCALE 1:100

CAPITOL DEVELOPMENT